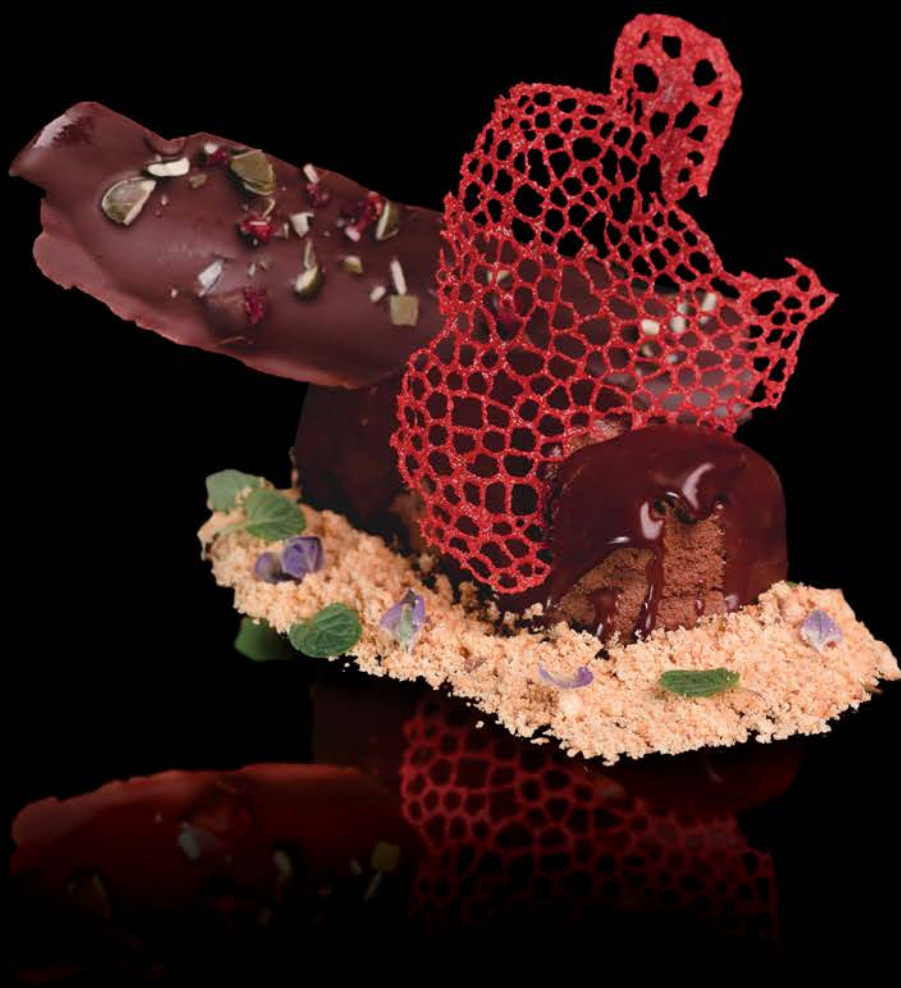




*Anna's Kitchen*  
@ Villa Anna Sophia



---

# DESSERT MENU

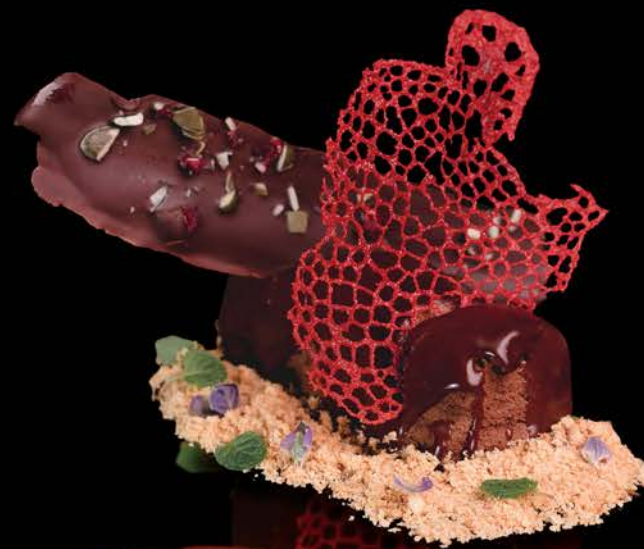
---





R45  
EACH

**TARTUFO**  
AMARETTO  
FUDGE & CARAMEL  
CARAMEL



R40

**CHOCOLATE MOUSSE  
AND SALTED CARAMEL  
SURPRISE**

R45

**DEEP FRIED  
ICE CREAM**

Ice cream crumbed  
with a nut and biscuit  
coating, deep fried and  
served with honey.



R40

**VANILLA & BELGIAN  
CHOCOLATE PANA COTTA**  
Served with a mixed  
berry compote.



R45

**FROZEN NOUGAT**  
Nougat infused  
ice cream with  
mixed nuts and  
glazed cherries.



R55

**MALVA PUDDING**  
Served with custard  
and ice cream.

R45

**LEMON MERINGUE  
BRÛLÉE**



R45  
EACH



**CHOCOLATE  
CRUNCH**

**CHOCOLATE  
CARAMEL CRUNCH**



R45

**AFFOGATO**  
An Italian coffee-based dessert,  
coffee liqueur with a scoop of  
vanilla ice cream served with a hot  
shot of espresso.





R45  SLICE

**BERRY CHEESE CAKE**

A cheesecake with berry filling topped with a homemade berry jelly.

R540  CAKE  
PLEASE PRE-ORDER

R50  SLICE

**THE FINEST BELGIAN CHOCOLATE MOUSSE CAKE**

Chocolate sponge cake layered with the finest Belgian chocolate mousse.



R600  CAKE  
PLEASE PRE-ORDER

  
**CALLEBAUT**  
BELGIUM 1911

R40  SLICE

R540  CAKE  
PLEASE PRE-ORDER

**GRANADILLA BAKED CHEESECAKE**

Baked cheesecake with a layer of cream cheese filling topped with a fruit puree.



R55  SLICE

**KIT KAT CAKE**

Layered Belgian chocolate cake with a mousse filling wrapped with chocolate fingers.



  
**CALLEBAUT**  
BELGIUM 1911



R40  SLICE

**LEMON MERINGUE**

A biscuit crust with a zesty lemon curd layer topped with a fluffy meringue.

R360  CAKE  
PLEASE PRE-ORDER



R660  CAKE  
PLEASE PRE-ORDER

  
**CALLEBAUT**  
BELGIUM 1911





R45



SLICE

**APPLE CRUMBLE  
SERVED WITH CREAM  
OR ICE CREAM**

Stewed apple and cinnamon  
baked with a perfect  
crumble finish.



R360

PLEASE PRE-ORDER



CAKE



**MINI CARROT CAKE**

Carrot cake iced with a cream cheese frosting  
garnished with chopped walnuts.

  
R45  
EACH

R55



SLICE

**CARROT CHEESE CAKE**

Layers of carrot cake and  
traditional cheesecake  
stacked together, coated in  
a cream cheese icing topped  
with pumpkin seeds,  
cranberries and dried apricots.



CAKE

R440

PLEASE PRE-ORDER

